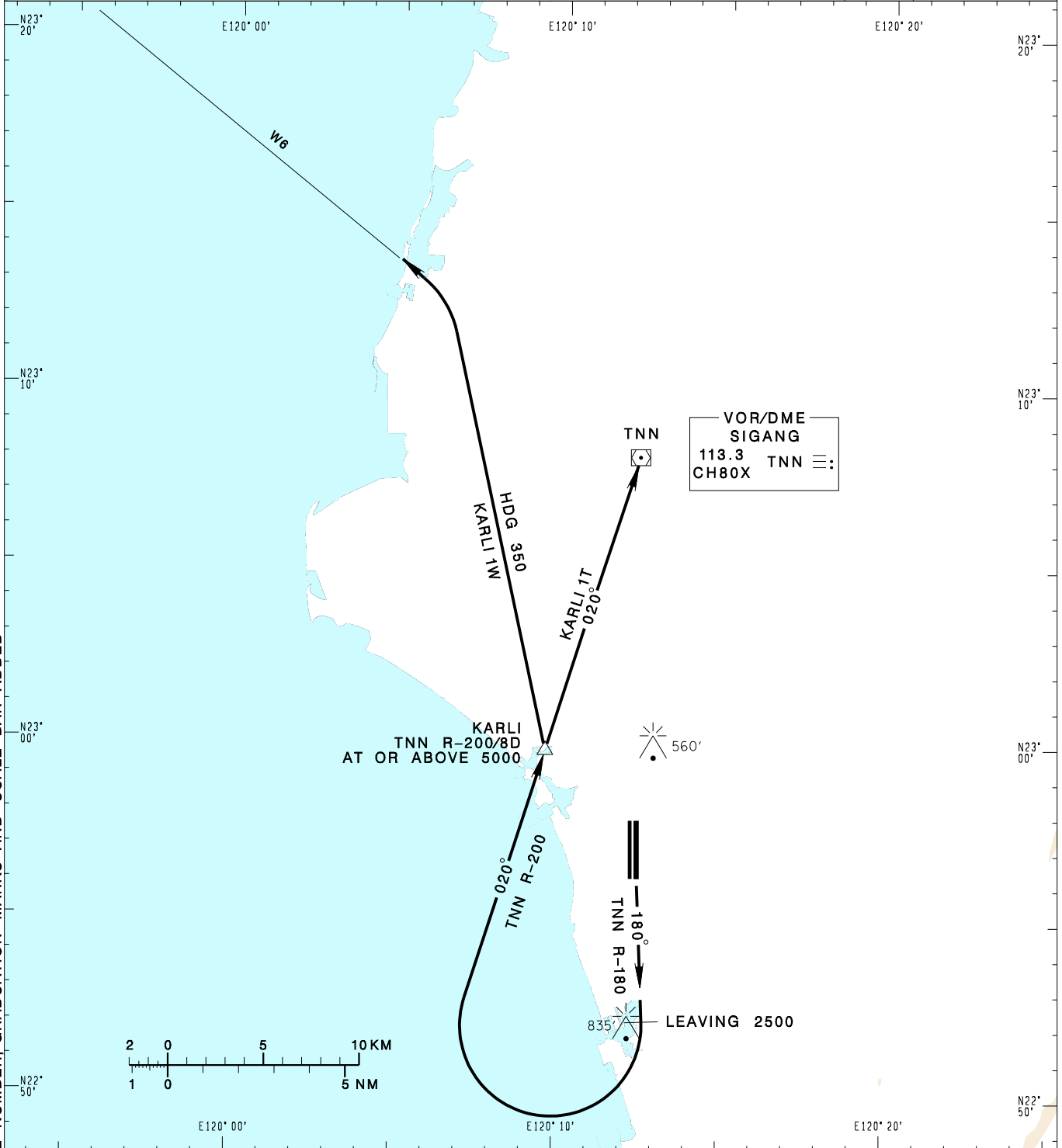


臺南機場
TAINAN AD

RCNN SID
KARLI 1T
KARLI 1W

KAOSIUNG APP 124.7 363.8	TAINAN TWR 118.4 236.6 126.18	GROUND 121.6	ATIS NIL	VAR 3° W	
Apt Elev: 64'		Trans Level: FL130			
BEARINGS ARE MAGNETIC; DISTANCES ARE NAUTICAL MILES; ELEVATIONS, HEIGHTS IN FEET					



CHANGES: NEW PAGE NUMBER, GRADUATION MARKS AND SCALE BAR ADDED

<p>KARLI ONE TANGO DEPARTURE Depart RWY HDG or via TNN R-180 until leaving 2,500ft, turn right to track TNN R-200 to KARLI then TNN to join airway, cross KARLI at or above 5,000ft.</p>	<p>NOTE Requires a minimum climb gradient of 3.6%(220ft/NM) until 1,200ft.</p>
<p>KARLI ONE WHISKEY DEPARTURE Depart RWY HDG or via TNN R-180 until leaving 2,500ft, turn right to track TNN R-200 to KARLI, cross KARLI at or above 5,000ft, then turn left HDG 350 to join W6.</p>	